

MFG Water Treatment Products Company
55 Fourth Avenue
PO Box 458
Union City, Pennsylvania 16438
Toll Free (877) 826-2509
Phone (814) 438-3959
Fax (814) 438-8538
Web Site www.mfgwtp.com

Product Guide Specification

Specifier Notes: This product guide specification is written according to the Construction Specifications Institute (CSI) 3-Part Format, including *MasterFormat*, *SectionFormat*, and *PageFormat*, contained in the *CSI Manual of Practice*.

The section must be carefully reviewed and edited by the Engineer to meet the requirements of the project. Coordinate this section with other specification sections and the drawings.

Delete all "Specifier Notes" when editing this section.

SECTION 11305

FRP LAUNDER COVERS

Specifier Notes: This section covers MFG Water Treatment Products Company FRP launder covers, for water and wastewater treatment plants. Launder covers are custom designed and are rectangular in shape. Consult MFG Water Treatment Products Company for assistance in editing this section for the specific application.

PART 1 GENERAL

1.1 SECTION INCLUDES

- A. FRP launder covers for water and wastewater treatment plants.

1.2 RELATED SECTIONS

Specifier Notes: Edit the following list of related sections as required for the project. List other sections with work directly related to this section.

- A. Section 11200 - Water Supply and Treatment Equipment.
- B. Section 11201 - Troughs.
- C. Section 11204 - Weir Plates and Scum Baffles.

- D. Section 11205 - Density Current Baffles.
- E. Section 11300 - Fluid Waste Treatment and Disposal Equipment.

1.3 REFERENCES

Specifier Notes: List standards referenced in this section, complete with designations and titles. This article does not require compliance with standards, but is merely a listing of those used.

- A. ANSI/AWWA F101-02 - Contact-Molded, Fiberglass-Reinforced Plastic Wash Water Troughs and Launderers.
- B. ANSI/NSF 61 - Drinking Water System Components - Health Effects.
- C. ASTM D 256 - Standard Test Methods for Determining the Izod Pendulum Impact Resistance of Plastics.
- D. ASTM D 570 - Standard Test Method for Water Absorption of Plastics.
- E. ASTM D 618 - Standard Practice for Conditioning Plastics for Testing.
- F. ASTM D 638 - Standard Test Method for Tensile Properties of Plastics.
- G. ASTM D 790 - Standard Test Methods for Flexural Properties of Unreinforced and Reinforced Plastics and Electrical Insulating Materials.
- H. ASTM D 2583 - Standard Test Method for Indentation Hardness of Rigid Plastics by Means of a Barcol Impressor (Barber Coleman 934 impresser).

1.4 SUBMITTALS

- A. Comply with Section 01330 - Submittal Procedures.
- B. Product Data: Submit manufacturer's product data, including description and physical properties of fiberglass reinforced plastic laminate. Submit manufacturer's installation instructions.
- C. Shop Drawings: Submit manufacturer's shop drawings showing plans, elevations, sections, and details of materials, components, structural supports, dimensions, tolerances, connections, attachments, adjustments, openings, mounting, fasteners, anchors, and assembly hardware.
- D. Samples: Submit manufacturer's 6-inch square sample of fiberglass reinforced plastic laminate of same construction, nominal thickness, and color as covers.
- E. Manufacturer's Certification: Submit manufacturer's certification that materials comply with specified requirements and are suitable for intended application.

Specifier Notes: Use the following sentence when NSF certification is required.

- F. Product Certification: Submit proof of NSF labeled products.

1.5 DELIVERY, STORAGE, AND HANDLING

- A. Delivery: Deliver materials to site with suitable packaging for ease of handling and to minimize damage during shipping, with labels clearly identifying manufacturer.
- B. Storage: Store materials on clean flat surface in accordance with manufacturer's instructions.
- C. Handling: Protect materials from damage during handling and installation.

PART 2 PRODUCTS

2.1 MANUFACTURER

- A. Supplier must be the manufacturer of the products, i.e., MFG Water Treatment Products Company, 55 Fourth Avenue, PO Box 458, Union City, Pennsylvania 16438. Toll Free (877) 826-2509. Phone (814) 438-3959. Fax (814) 438-8538. Web Site www.mfgwtp.com.
- B. Manufacturer and supplier must be NSF 61 Certified.

2.2 FRP LAUNDER COVERS

- A. Material:
 - 1. Laminated fiberglass reinforced isophthalic polyester resin.
 - 2. Nominal Outside Surface: Smooth gel-coat resin finish.
 - 3. Underside Surface: Gel-coat resin to seal entire surface.
 - 4. Cut Edges: Seal with isophthalic polyester resin.
 - 5. Glass: Type E, random chopped with chrome or silane finish.
 - a. Binder: Compatible with resin.
 - b. Glass Strand Length: Minimum 1 inch.
 - 6. Fabrication: Adequate contact molding pressure to ensure complete resin wet-out of glass fibers.

Specifier Notes: The standard color is aqua. Consult MFG Water Treatment Products Company for availability of custom colors.

- 7. Color: [Aqua green] [_____]. Color molded-in with ultraviolet inhibitor.

B. Fiberglass Reinforced Plastic (FRP) Laminate Physical Properties:

- 1. Tensile Strength, ASTM D 638: 18,500 psi.
- 2. Flexural Strength, ASTM D 790: 27,900 psi.
- 3. Flexural Modulus, ASTM D 790: 900,000 psi.
- 4. Barcol Hardness, ASTM D 2583: 40.
- 5. Notch Izod Impact, ASTM D 256: 12 ft-lbs/inch.
- 6. Water Absorption, ASTM D 570: 0.13 percent.
- 7. Test Coupon Preparation: ASTM D 618.

C. Design:

- 1. Support applied downward vertical or gravity loadings.
- 2. Meet required snow load of 30 psf, wind load of 15 psf and human load of 250 psf (applicable for walk-on cover).
- 3. Covers supported off the top of the weir wall will not be permitted.

D. Compliance:

Specifier Notes: Specify the required standards.

1. ANSI/AWWA F101-02, Type I.
2. ANSI/AWWA F101-02, Type II.
3. ANSI/NSF 61 certified.

PART 3 EXECUTION

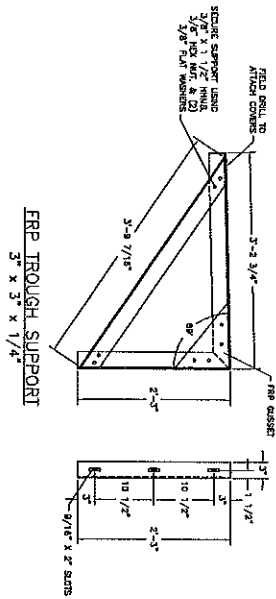
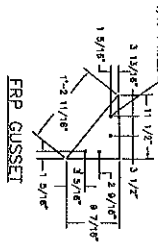
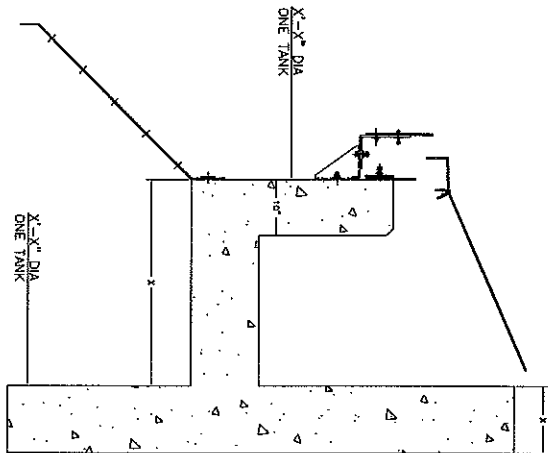
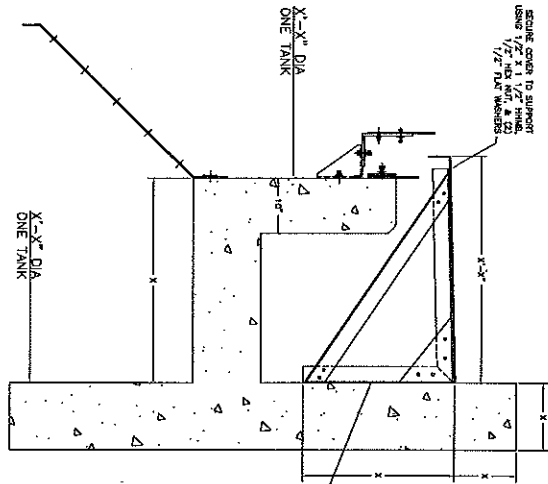
3.1 EXAMINATION

- A. Examine areas to receive covers.
- B. Verify field dimensions.
- C. Notify Engineer of conditions that would adversely affect installation. Do not proceed with installation until unsatisfactory conditions have been corrected.

3.2 INSTALLATION

- A. Install covers in accordance with manufacturer's instructions.
- B. Install covers plumb, level, square, in true and proper alignment, and without warp or twist.

END OF SECTION

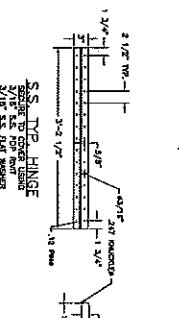
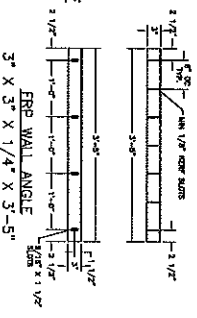
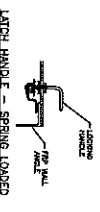
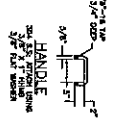
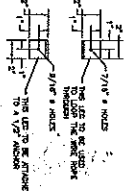
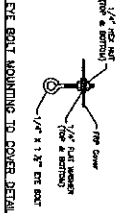
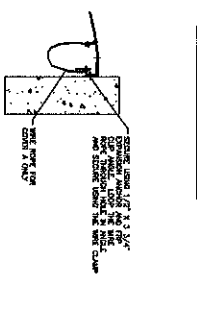
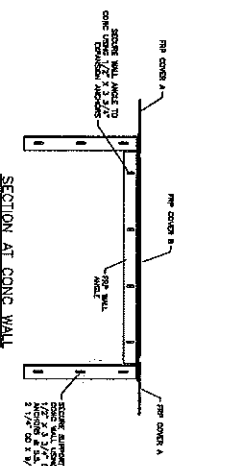
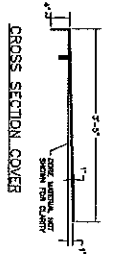
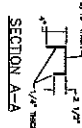
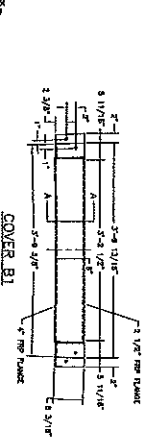
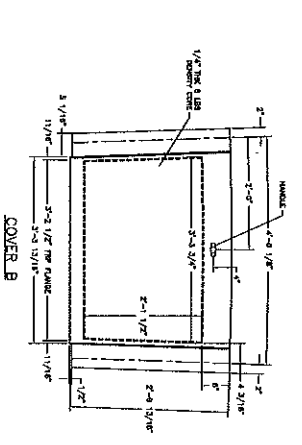
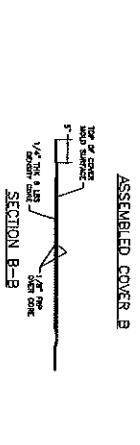
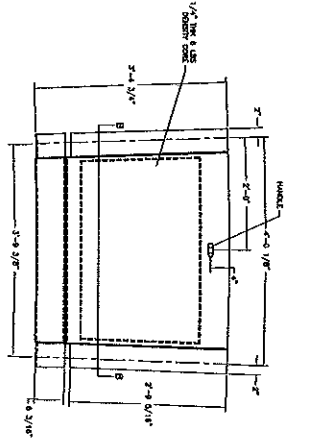
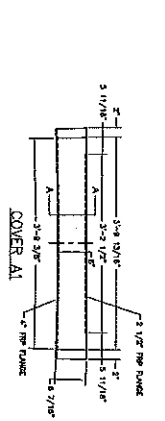
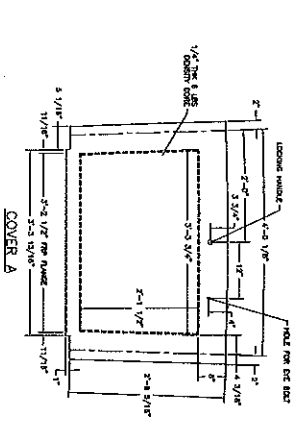
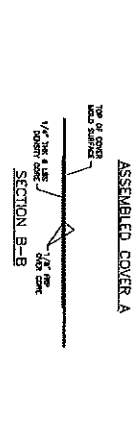
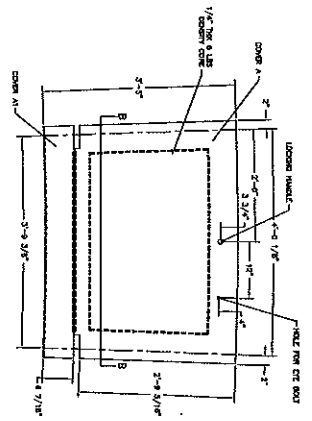


MFG WATER TREATMENT ("WATER") has no responsibility for the contract design of the product or the contract specifications. WATER has been selected to manufacture this product, the customer hereby releasing to this product, its performance, merchantability and fitness for purpose (including all liability for claims, suits, judgments and expenses), unless otherwise stated. MFG WATER TREATMENT ("WATER") reserves the right to modify the contract design and specifications set or WATER'S shop drawings approved by the customer.

SHEET NO. 3379-4	DIVISION: MFG/WTP
	DRAWN BY: M. JOHNSON
	CHECKED BY:
	APPROVED:
DATE: X	

MFG WATER TREATMENT PRODUCTS COMPANY
 55 4th AVENUE UNION CITY, PA 16438 PHONE: (814) 438.3959 FAX: (814) 438.8538
 SCALE: TITLE: LAUNDER COVER DETAILS REF: X

NO.	REVISIONS	DATE



MFG WATER TREATMENT ("WATNE") has no responsibility for the contract design of the product or the contract specifications. MFG WATER has been selected as manufacturer of this product. The customer's liability relating to this product, its performance, its reliability, its maintainability and fitness for purpose (including all warranties) shall remain with the customer. MFG WATER does not warrant the product as manufactured, sold by MFG WATER, and does not conform to the contract design and specifications set or MFG WATER'S shop drawings approved by the customer.

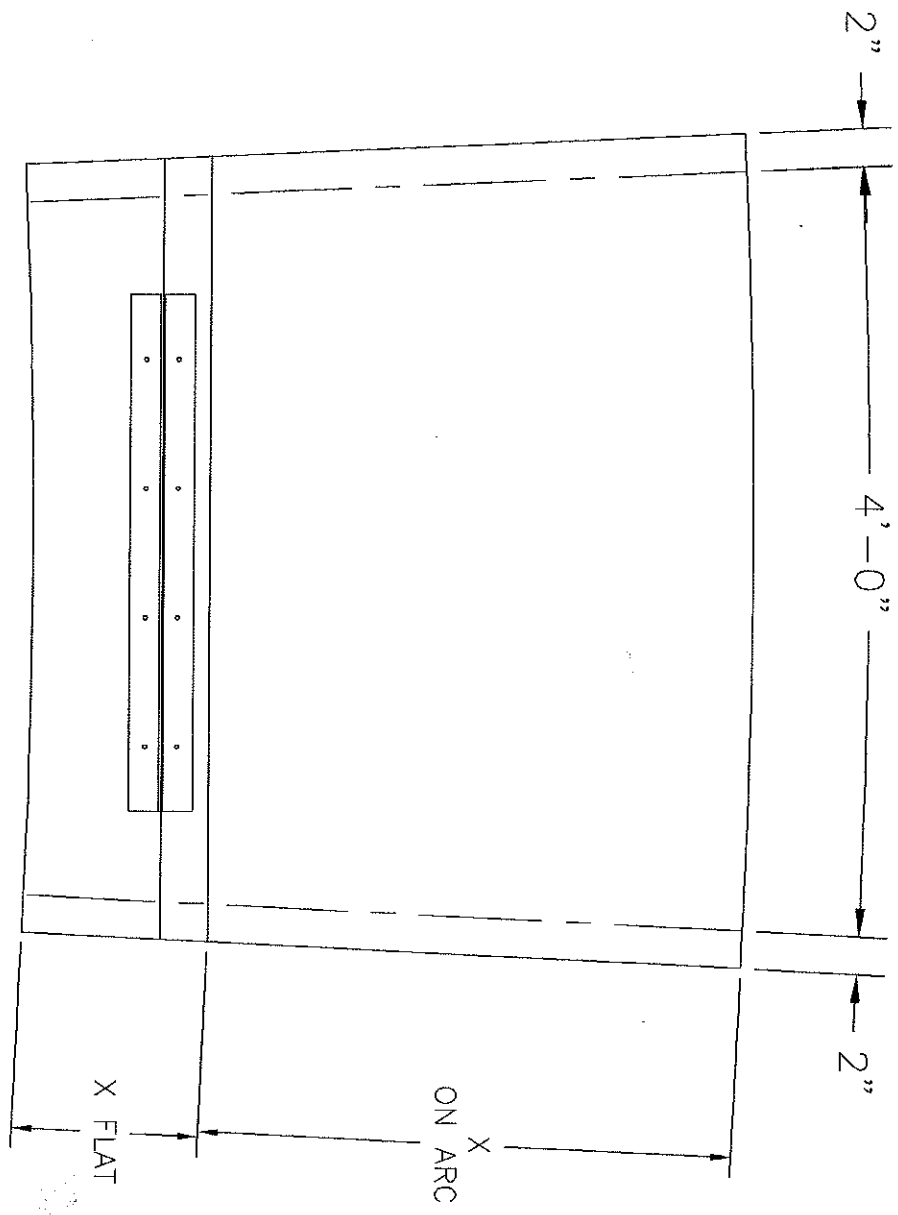
FIBERGLASS COVERS TO BE ISOPHTHALIC POLYESTER RESIN
MARINE WHITE IN COLOR

SHEET NO.	3579-3
DIVISION:	MFG/WTP
DRAWN BY:	M. JOHNSON
CHECKED BY:	
APPROVED:	
DATE:	X

MFG WATER TREATMENT PRODUCTS COMPANY
 55 4th AVENUE UNION CITY, PA 16438 PHONE: (814) 438.3955 FAX: (814) 438.8538
 SCALE: TITLE: LAUNDRY COVER DETAILS REF: X

NO.	REVISIONS	DATE

COVER A DETAIL - PLAN VIEW



WATER TREATMENT PRODUCTS COMPANY (WTPC) has no responsibility for the design, construction, installation, operation, or maintenance of any equipment or system which has been selected to manufacture this product. The customer agrees to indemnify and hold WTPC harmless from and against all liability for claims, suits, judgments and expenses, unless the product or manufacturer by WTPC does not conform to the design and specifications set or WTPC's shop drawings approved by the customer.

SHEET NO. X	DIVISION : MFG/WTP
	DRAWN BY : M. JOHNSON
	CHECKED BY : X
	APPROVED :
DATE : 10-22-02	

MFG WATER TREATMENT PRODUCTS COMPANY
 55 4th AVENUE UNION CITY, PA 16438 PHONE: (814) 438.3959 FAX: (814) 438.8538
 SCALE: TITLE: COVER DETAILS REF. X

NO.	REVISIONS	DATE